



MANOR  
GREENZ

LAVISH 4 BEDS & PENTHOUSES



MANOR  
GREENZ

LAVISH 4 BEDS & PENTHOUSES



Double Height Entrance Lounge



Welcome Foyer

# Feel<sup>🐦</sup> Sunrise



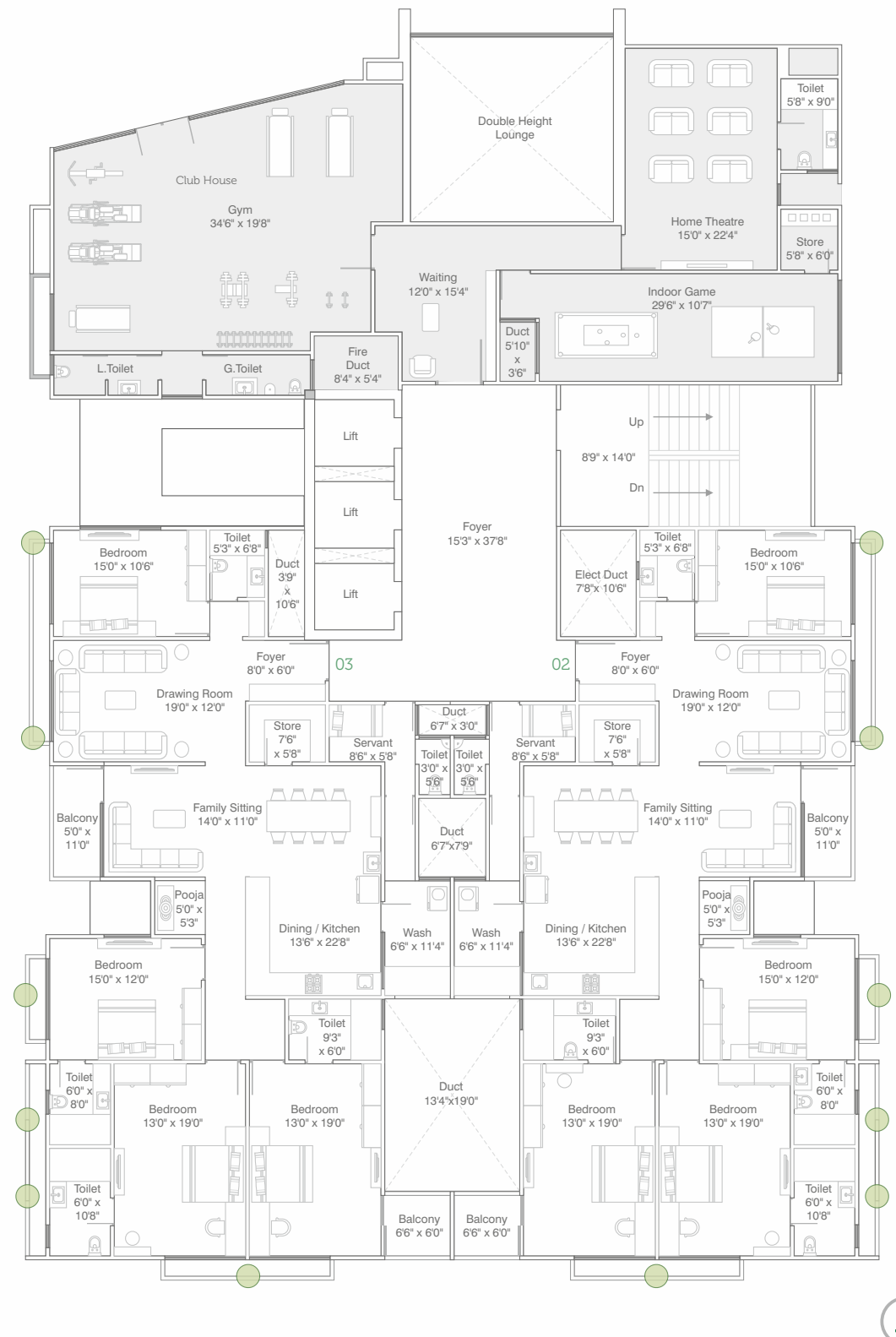
Front View Facade



Ground Floor  
(Layout)



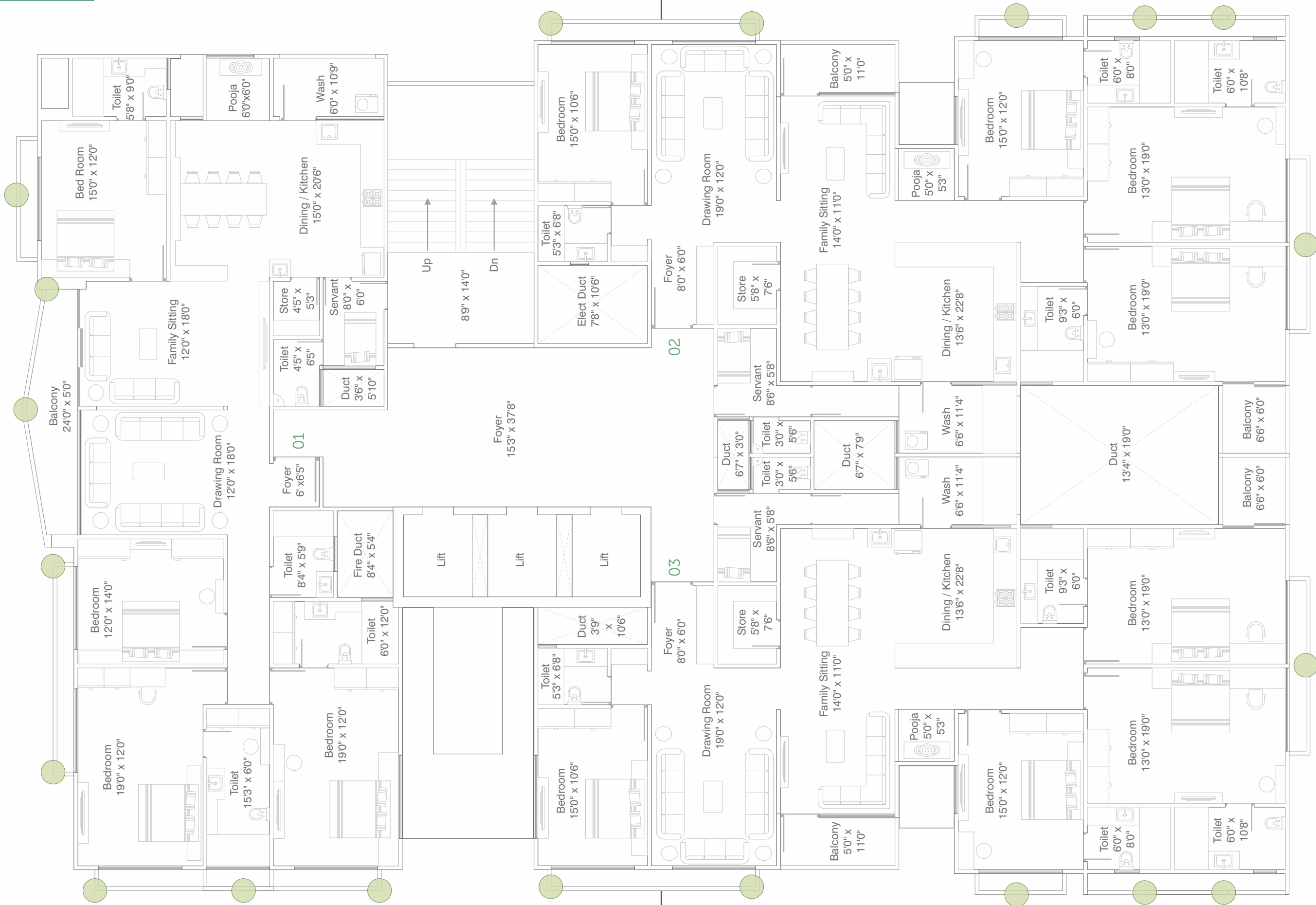
First Floor





# Typical Floor

(2 TO 12)

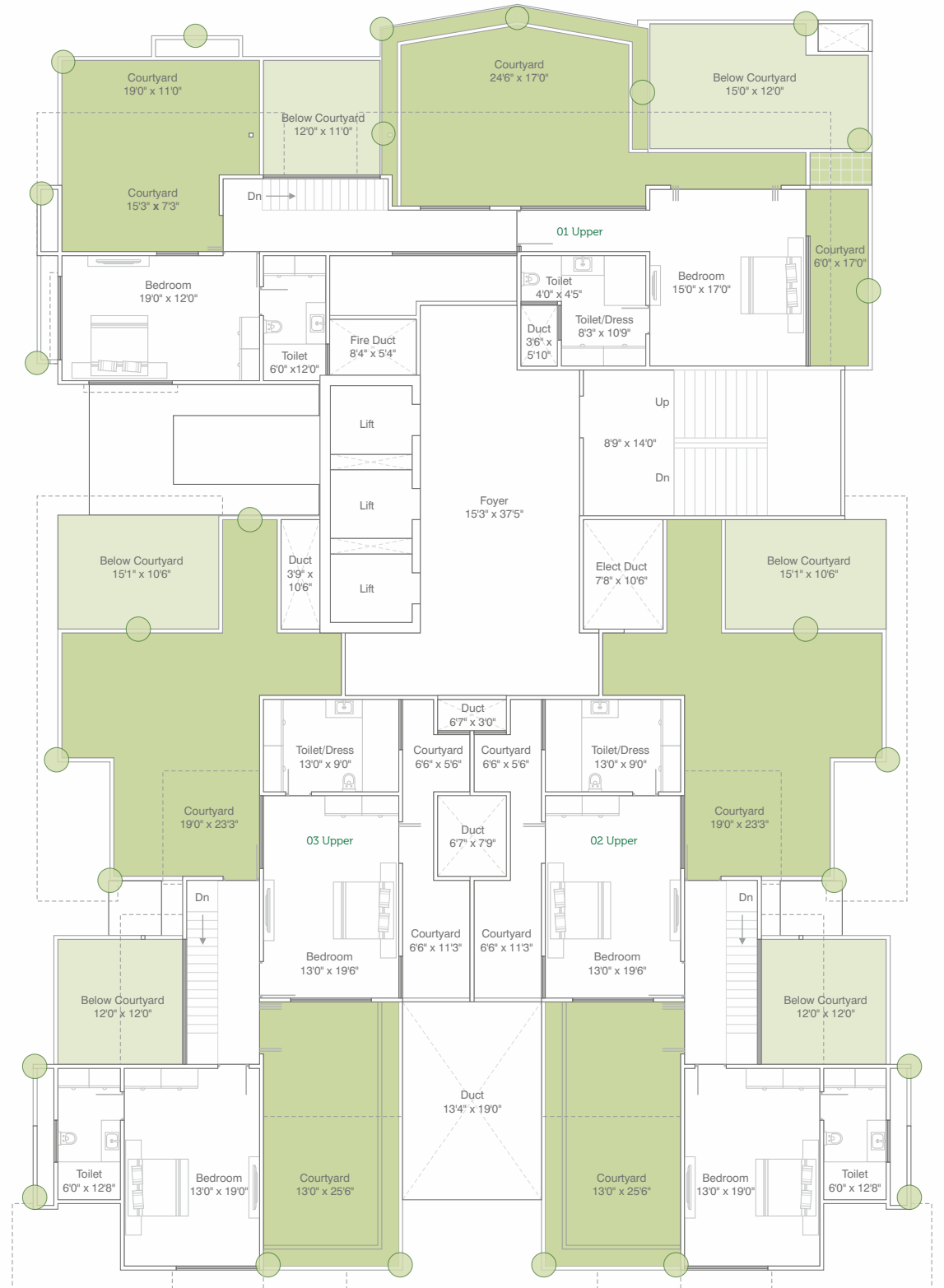
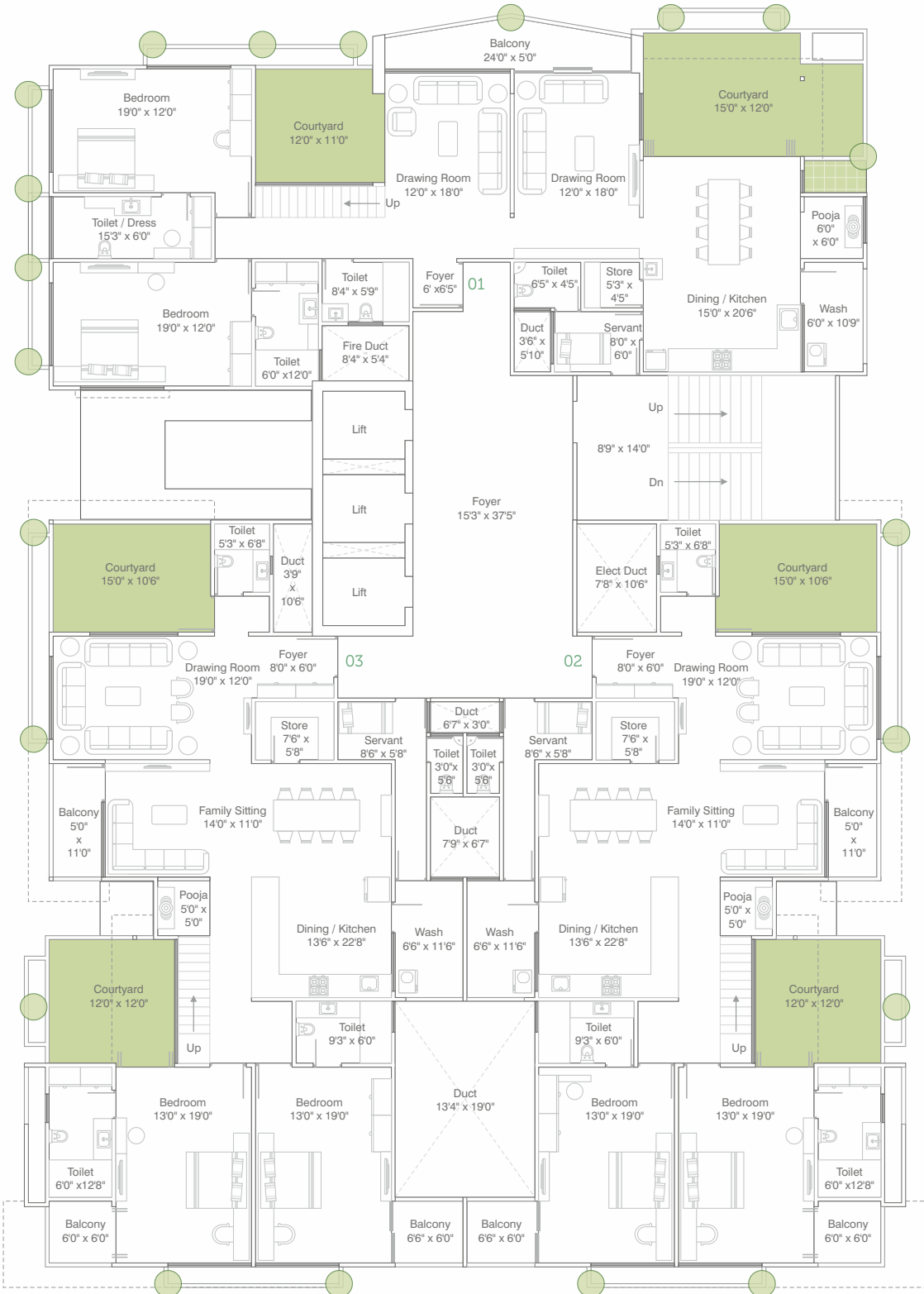




# Lower Penthouse



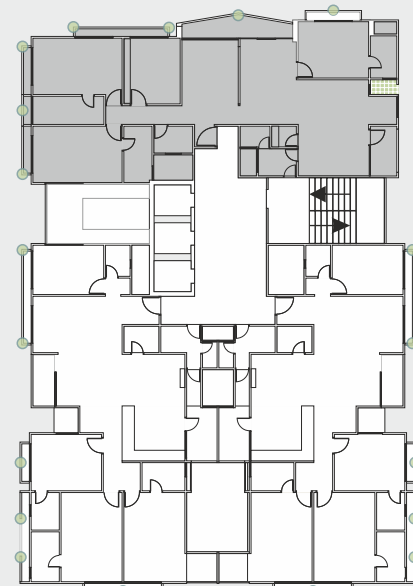
# Upper Penthouse



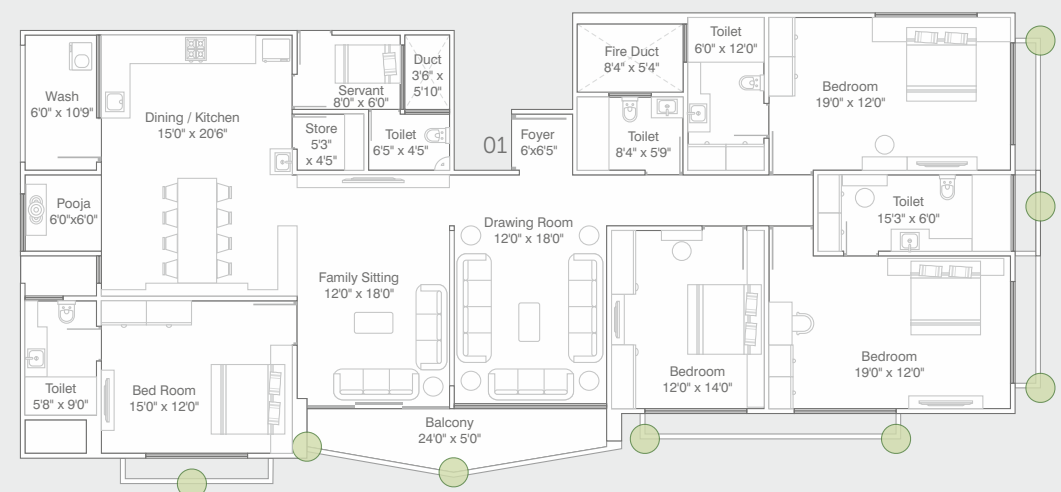


Plan Type A

100' Wide B.R.T.S. Road



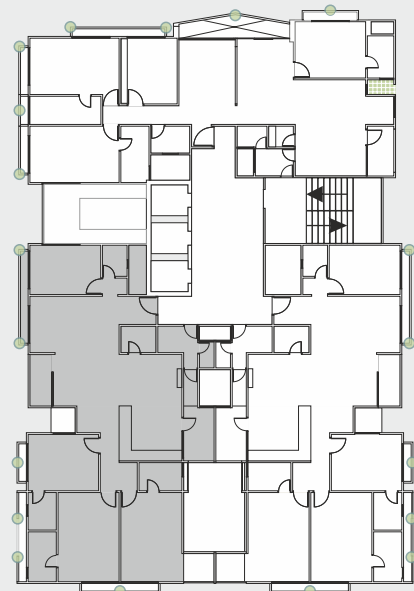
50' Wide T.P.S. Road





Plan Type B

100' Wide B.R.T.S. Road



50' Wide T.P.S. Road





MANOR  
GREENZ

LAVISH 4 BEDS & PENTHOUSES





**FLOORING**

- Drawing, Living & Dining : Italian Marble
- Two Master Bed rooms : Wooden Flooring
- Other Bedrooms : Composite Italian Marble
- Kitchen
- Flooring : Italian Marble
- Platform : Imported Granite with dedo 4' Ceramic Tiles
- Store Room
- Shelf : DP Kota Stone with ceramic dedo
- Floor : Vitrified Tiles
- Wash area
- Floor : Kota Stone
- Dedo : Vitrified Tiles
- Shelf : DP Kota Stone for Extra Storage

**BALCONY**

Rustic Tiles

**WINDOWS**

Premium quality wooden U.P.V.C. sliding windows with stone revile

**DOORS**

Main Door : One side veneer with auto lock.  
Other Doors : Flush Door (32 mm) with SS matt finish handle locks.

**TOILETS**

- Glazed / Vitrified tiles up to lintel level.
- Granite / composite Marble Counter basin.
- EWC - Wall hung type - Duravit, American Standard or equivalent.
- CP Brass fitting - Kohler or equivalent.
- Shower Panel with Glass cubicle in two master bedrooms.

**ELECTRIFICATION**

Three phase concealed ISI copper wiring with modular switches and M.C.B. distribution panel.

**SECURITY**

Smart screen security system with video phones of honeywell or equivalent in each flat with CCTV in common areas.

**AIR CONDITION**

- Air conditioned unit in each apartment.

**INTERNAL & EXTERNAL WALLS**

- Internal walls Single coat mala plaster with putty finish.
- External walls sand faced plaster with Apex / Texture paint.

**Salient Features**

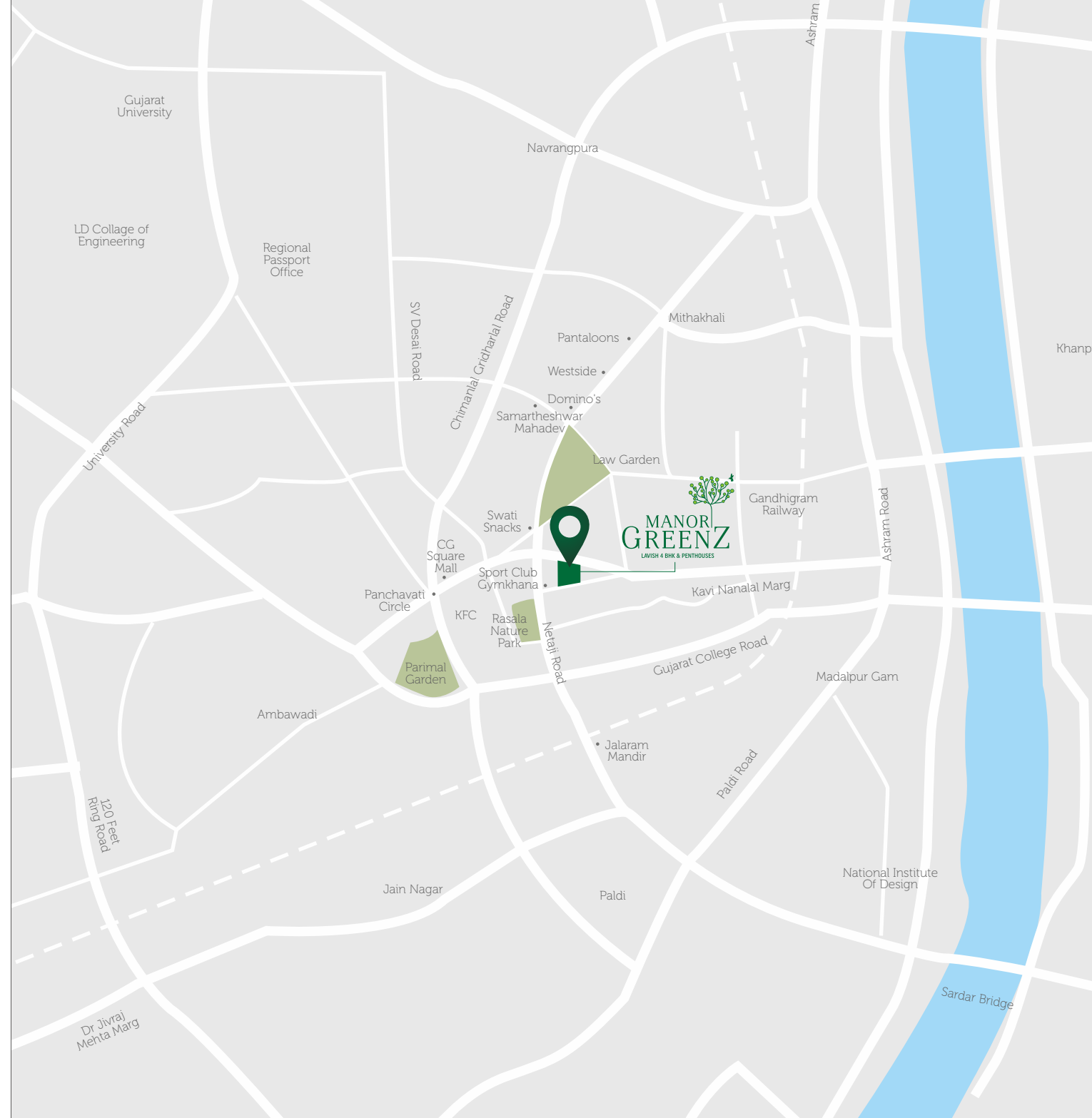
- Three Car parking per apartment.
- Centrally DTH Satellite TV connection in Drawing / Living & Master Bedroom.
- Broadband connection.
- Three Automatic Elevator
- Pressure water system.
- Well designed centrally A/C waiting lounge.
- Fully furnished gymnasium with morden equipments.
- 24 X 7 Security with CCTV in entire premises.

**Special Notes**

- Developers reserve the right to change or revise or make any modifications, additions, omissions, or alterations in the scheme as a whole or any part thereof or any details therein, at their sole discretion without prior notice.
- Such changes would be binding to all the members.
- All the architectural and interior views in brochure are computer graphics simulated interpretation of the actual property.
- All the dimensions given are approximate & from unfinished surfaces.
- This brochure is just for an easy presentation of the project and should not be treated as a legal document.

• 14 <sup>th</sup> Floors + 15 <sup>th</sup> Terrace for Common Amenities	• Uninterrupted views - no high - rises in vicinity
• Wooden finish UPVC window	• Airconditioned units including kitchen
• Italian flooring	• 3 car park per unit
• 35 units with no common walls & 3 Duplex Pent Houses	• 2 side road access
• 24 Feet balcony with Pristine views in Type A units	• Double height entrance lounge
• Private balcony in master bed in Type B units	• D.G. Power backup for common facility
• 3 Stretcher size 16 passenger elevators	• Water Softener
• Indoor games, home theatre & Gymnasium	• Servant room with attached toilet
• Ultra modern modular kitchen	• Shower cubicles in master bed toilets

Feel  
Lavish



Developers :  
**ASHTAVINAYAK**  
 Corporation

A Project By :



# MANOR GREENZ

LAVISH 4 BEDS & PENTHOUSES

Nr. Ellisgridge Gymkhana Club,  
 Law Garden, Ahmedabad - 380006.

Contact :  
 95865 00099 / 98242 14452 / 98252 12195  
 W : [www.manorgreenz.com](http://www.manorgreenz.com)  
 E : [sales@manorgreenz.com](mailto:sales@manorgreenz.com)