

Antriksh

skyline

A life without luxury is not worth living

3 BHK LUXURY LIVING

FROM THE DESK OF
DEVELOPERS



89 projects and 9,900 dreams have been getting fulfilled over these 39 years.

These figures resemble the lavish real estate legacy and pinch how much **HOME MAKER** is trustworthy as a brand. It is a very well derived fact that, if you try to give something good to the people from the heart, they too do not hold back in showering love and belongingness from the heart.

Thankfully we have been rejoicing this partnership for more than three and a half decades. To carry forward this relationship, we are ready to present **ANTRIKSH SKY LINE**.



PROJECT INSIDE OUT

It's been a myth that a 3 BHK residential project can't be lavish enough as 4 BHK, but this myth will be proved wrong with this project. Because in every inch of **Antriksh Skyline**, one would witness a desired posh feel whether it's the location, elevation, planning, amenities and so on.



DEVELOPERS SAY

In the construction field, you can give justice to the word 'Developer', if you are constantly willing to upgrade to make the word worthwhile, and we have been working tirelessly for the last 39 years. With each new project, we aim to raise the level of luxury. Hopefully, we will succeed in fulfilling the same in the space skyline.

BREATH THE BREEZE



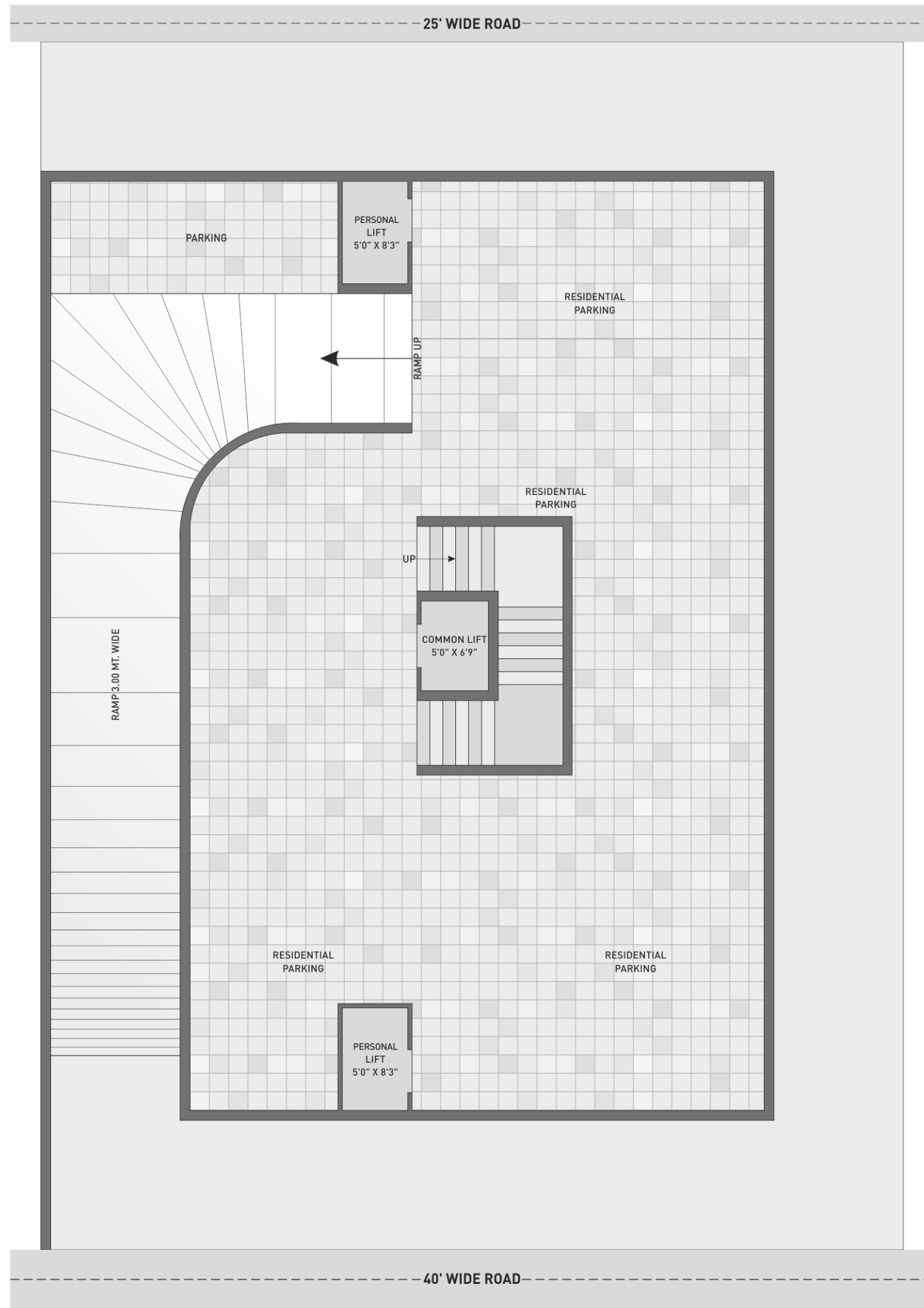
What is wholesome living? If someone asks this, let them look at **Antriksh Skyline**. It is a kind of living where everything seems flawless. Specifically, one would get a free breeze and light due to two side open road openings.

GET THE EASE EASILY

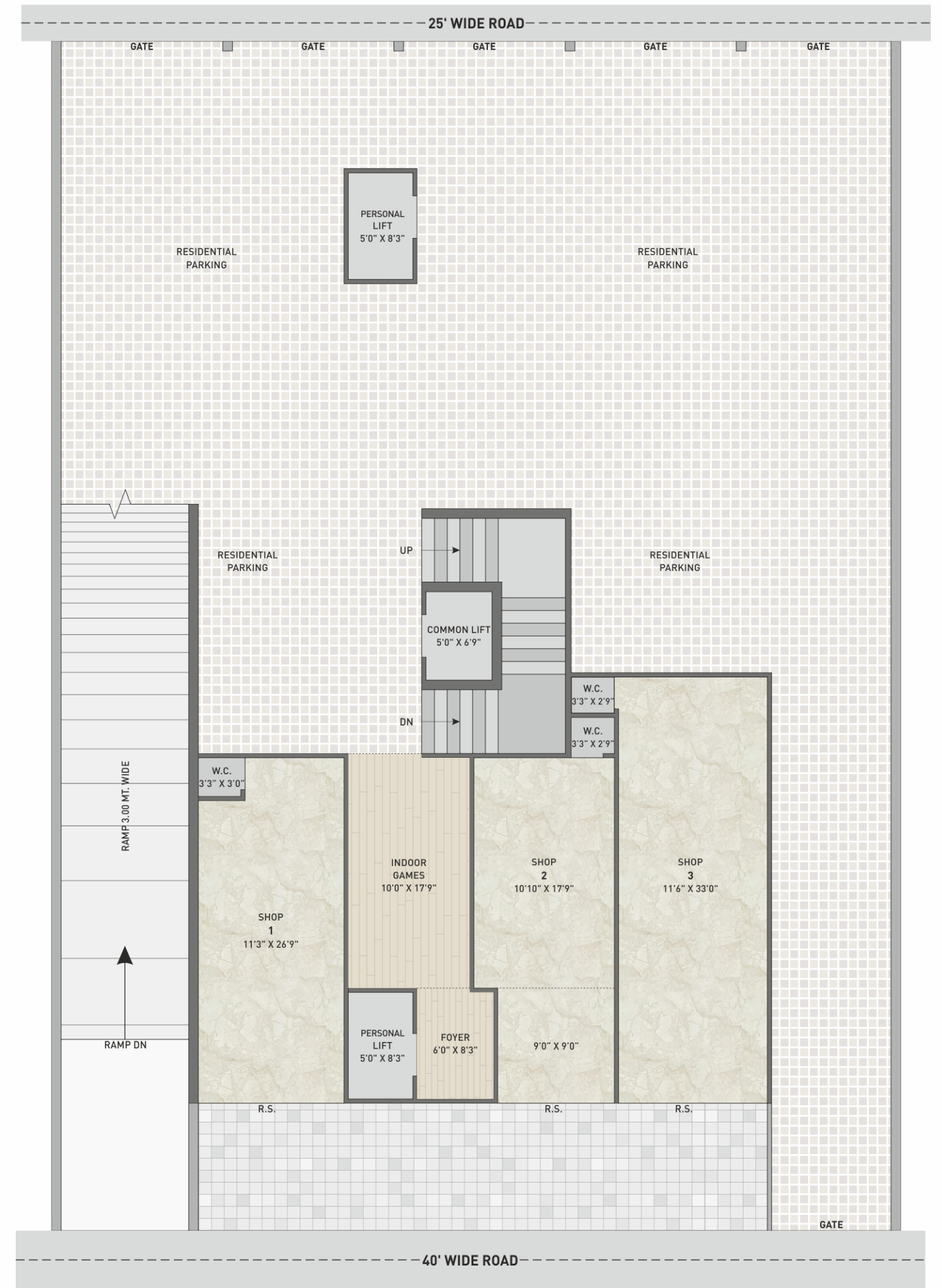
It is more convenient to have maintainable amenities rather than having an unnecessarily long list of amenities. Personal over head water tank, allotted car parking, children's play area enhances the ease of living.



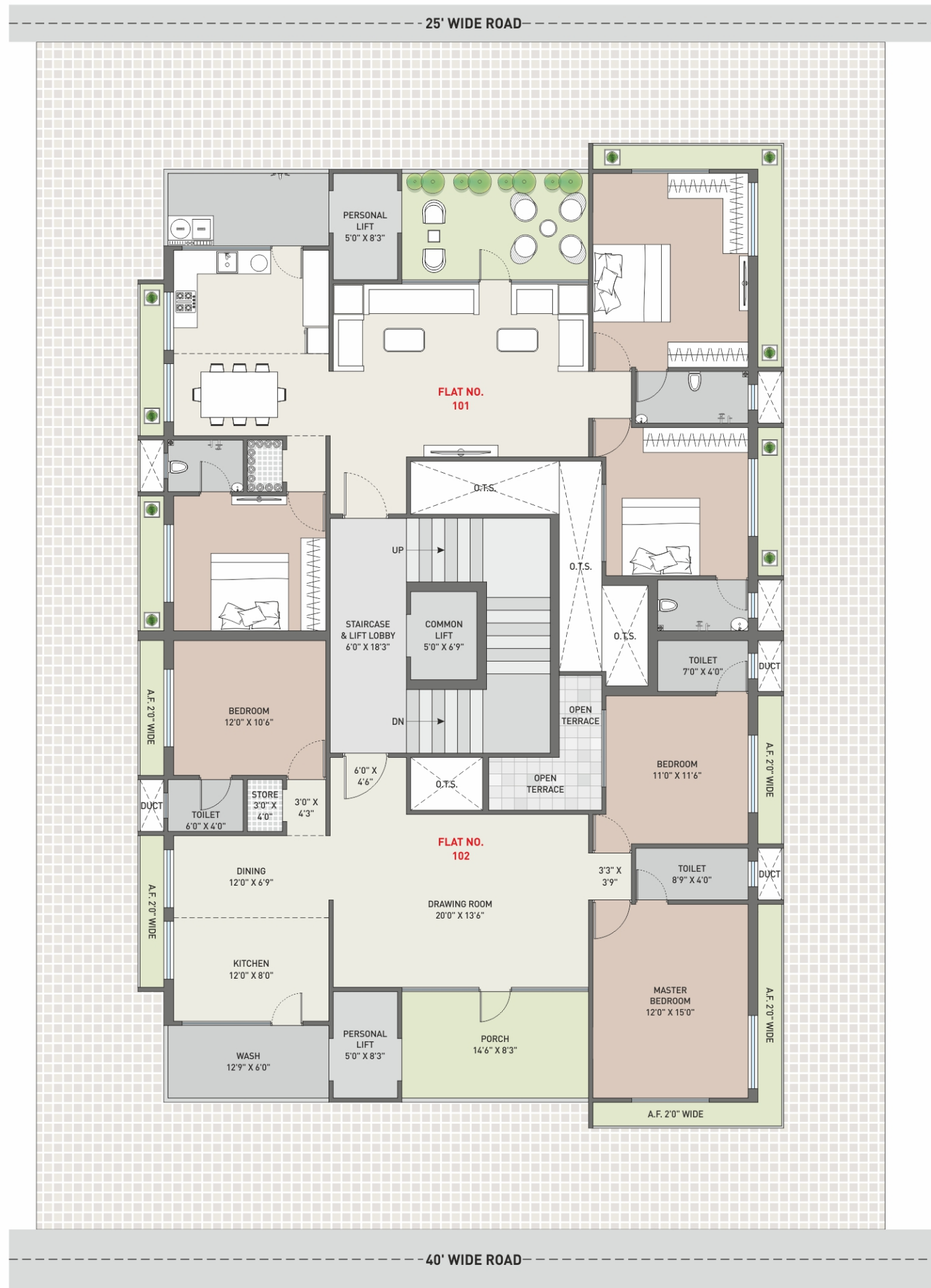
BASEMENT FLOOR PLAN



GROUND FLOOR PLAN



1st FLOOR PLAN



2nd TO 7th FLOOR PLAN





GLOWING GLOBE

Due to the lighting placed in the elevation plantation would seem gorgeous during the nighttime. And SKYLINE written in the vertical formation gets the rest job done.

AMENITIES

- ALLOTTED CAR PARKING FOR EACH & EVERY FLAT.
- PERSONAL OVER - HEAD WATER TANK FOR EACH FLAT.
- CHILDREN PLAY AREA AT GROUND FLOOR.
- EARTHQUAKE RESISTANT & RCC FRAME STRUCTURE BUILDING WITH GOOD QUALITY MASONRY MATERIAL.
- EVERY FLAT BREATHS IN FULL AIR & LIGHT WITH ROAD OPENINGS.
- MARKETABLE CLEAR TITLE & J.M.C. APPROVED BUILDING PLAN.
- BEAUTIFUL & ATTRACTIVE ELEVATION.
- COMMON TOILET AT GROUND FLOOR.
- ATTRACTIVE NAME PLATE OF FLAT OWNER'S AT GROUND FLOOR
- AMPLE PARKING SPACE AT GROUND FLOOR & BASEMENT.
- WATER PROOFING IN BALCONIES, ROOF SLAB & TOILET SUNK SLAB.

SPECIFICATIONS

FLOORING

- Premium quality vitrified in drawing, dining, Kitchen & bedrooms.
- China mosaic flooring on terrace floor.

KITCHEN & WASH YARD

- Fully Glazed tiles up to slab level.
- Black granite platform with S.S. sink.
- Ample electric point for mixer, juicer, microwave, etc.
- Provision for R.O. Plant & Washing Machine in wash area.
- Glaze tiles in washing area & anti - skid tiles in flooring.
- Provision for chimney point on main platform.

PLUMBING

- C.P.V.C. pipes for water supply & P.V.C. pipes for soil, drainage & waste system.

WINDOWS

- All UPVC windows with Mosquito net.
- Fully glazed with granite / marble sill.

ENTRANCE

- Attractive entrance foyer.
- Entry & exit of building with camera surveillance.
- All lifts, stairs, passages with camera surveillance.

DOORS

- Decorative laminated / modular main entrance door with lock system of branded company.
- Modular door or laminated doors with wooden / granite / marble door frames in all internal openings.
- All doors with necessary hardware fitting of well known brand.

POWER BACKUP

- Automatic generator of well known company for lift, common area lighting & pumps

BATHROOMS

- Fully glazed tiles up to slab level.
- Standard quality sanitarywares.
- Standard quality plumbing fittings.
- Exhaust fan provision.
- Provision for electric geyser point.

SECURITY

- Video door phone in each flat.
- Intercom facilities to talk with watchman & other flat members.

LIFT

- Automatic opening auto door 3 lifts.

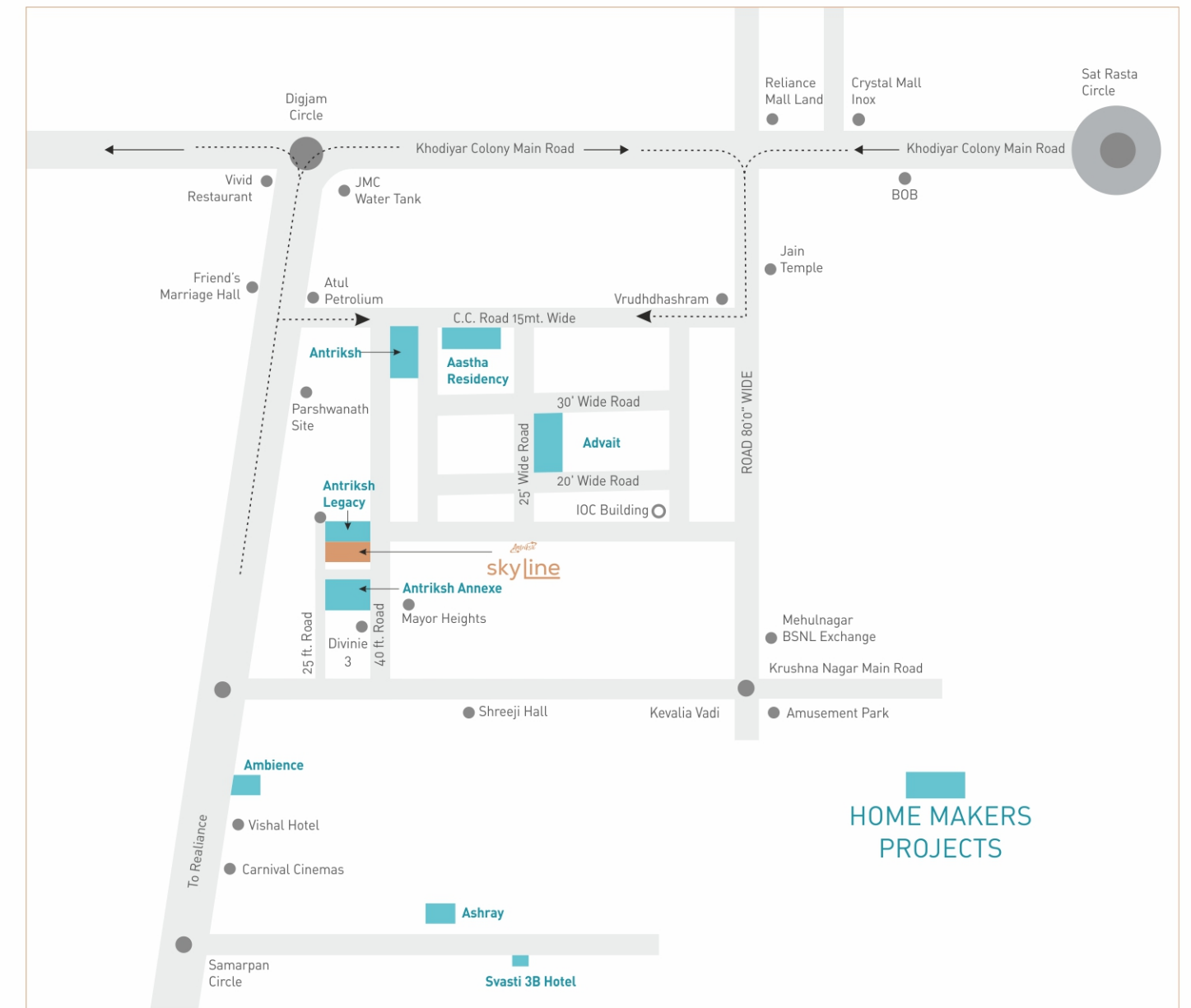
ELECTRIC

- Branded modular switches
- Premium quality ISI copper wiring with ample no. of points.
- T.V. / Telephone / AC etc, points in drawing, dinning & bedroom.
- Concealed wiring of well known brand.
- Provided basic holes for outlet units of split AC fitting in all bedrooms.

PLASTER & COLOR

- Internal plaster with acrylic putty finish.
- Sand face plaster on exterior surface of building.
- Acrylic emulsion paint on exterior walls.

KEY PLAN



Structure Engineer



SOMIL KHATTAR
98796 44646

Architect



UTTAM ART
KIRTIBHAI ZAVERI

Legal Advisor

DILIPBHAI BHOJANI

94269 18755

www.homemaker.in

homemaker_1982@yahoo.com

Note. :

- Payment of all extra work to be executed shall be made in advance. • Stamp duty towards registration shall be borne by the client.
- Municipal corporations & GEB charges, if any, shall be borne by client. • Any central or state govt. taxes, if applicable shall have to borne by the clients.
- All members shall have to essentially be the part of the society formed by the Association. • Irregular payments may lead to cancellation of bookings and late payment will be charged. • Legal documentation charges shall be borne by clients of members & shall abide by the society by - laws.

•The information contained in this brochure is indicative of the kind of development that is proposed. It is prepared & issued in good faith and is for guidance only. It does not constitute part of an offer or contract. Subject to the approval of the authorities of in the interest of the continuing improvement, the promoters reserve the rights to change plans, No. of storeys, specifications of features without prior notice of obligation. Guidelines are enforced for not allowing grills, flower pots etc. to be fixed outside windows or any changes to be made in external elevation. All the images are just for idealization.

CLICK HERE
FOR LOCATION



A Project By



BUILDERS AND DEVELOPERS
DHIMANT SHAH | DIVYESH SHAH

NISHITH SHAH
97148 15158 | 81609 13335



Besides Antriksh Legacy, Opp. Shreeji Hall Lane,
Mehul Nagar, Jamnagar.