



**ALPINE
WOODS**

3 & 4 BHK BUNGLOWS @ LAKHABAVAD



32 units



Alpine woods is a charming **3 side open villas** offering A perfect escape with stunning views and serene Surroundings with only **32 units**. This picturesque retreat features cozy, well-appointed interiors, spacious Outdoor areas for relaxation, specious club house and easy access to nearby Nature activities. Ideal for a peaceful getaway, alpine woods combines the Comforts of modern living with the tranquility of nature making it an excellent Choice for those seeking a refreshing break from city life.

A reputaion of
INNOVATION, QUALITY AND TRUST

FROM THE DESK OF
DEVELOPERS



Right
choice for
a perfect
home maker

 Builders established in 1982, is a Real Estate company committed to building aspirations and delivering value. The company has developed over 22 million square feet of prime residential & commercial real estate across Jamnagar & Ahmedabad over 92 Projects & Over 10000+ Dreams across 90+ landmark properties stand testimony to the company's commitment, In the 42nd year of the company's journey,  is all set to progress further with projects integrity and quality.

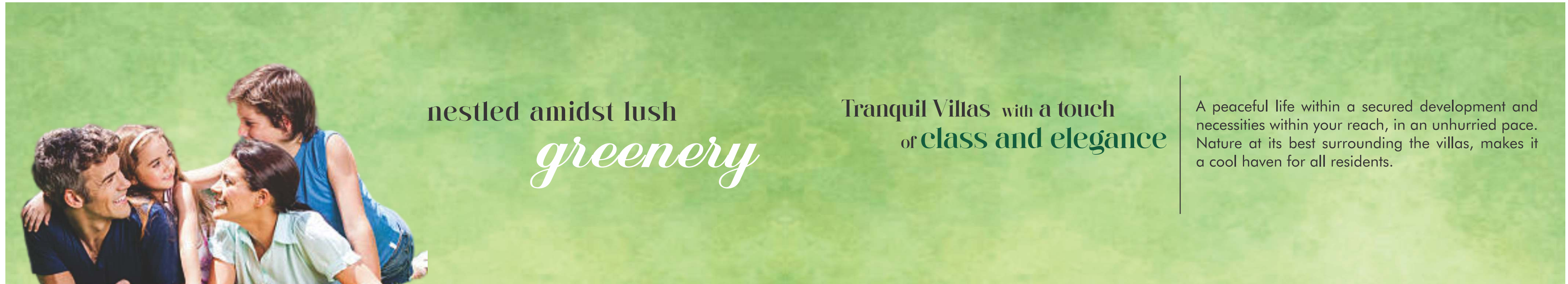


The layout of the land with rich greenery all around and its proximity to abundant nature is what inspired Alpine Woods.

Each individual villa in the estate is meticulously planned to be a luxurious abode in a sea of green and the result is a classy confluence of style, space, form and function.

ALPINE WOOD





nestled amidst lush
greenery

Tranquil Villas with a touch
of **class and elegance**

A peaceful life within a secured development and necessities within your reach, in an unhurried pace. Nature at its best surrounding the villas, makes it a cool haven for all residents.





Hand-Pick

Villas

"Elevate your lifestyle, Villas that make it worthwhile."



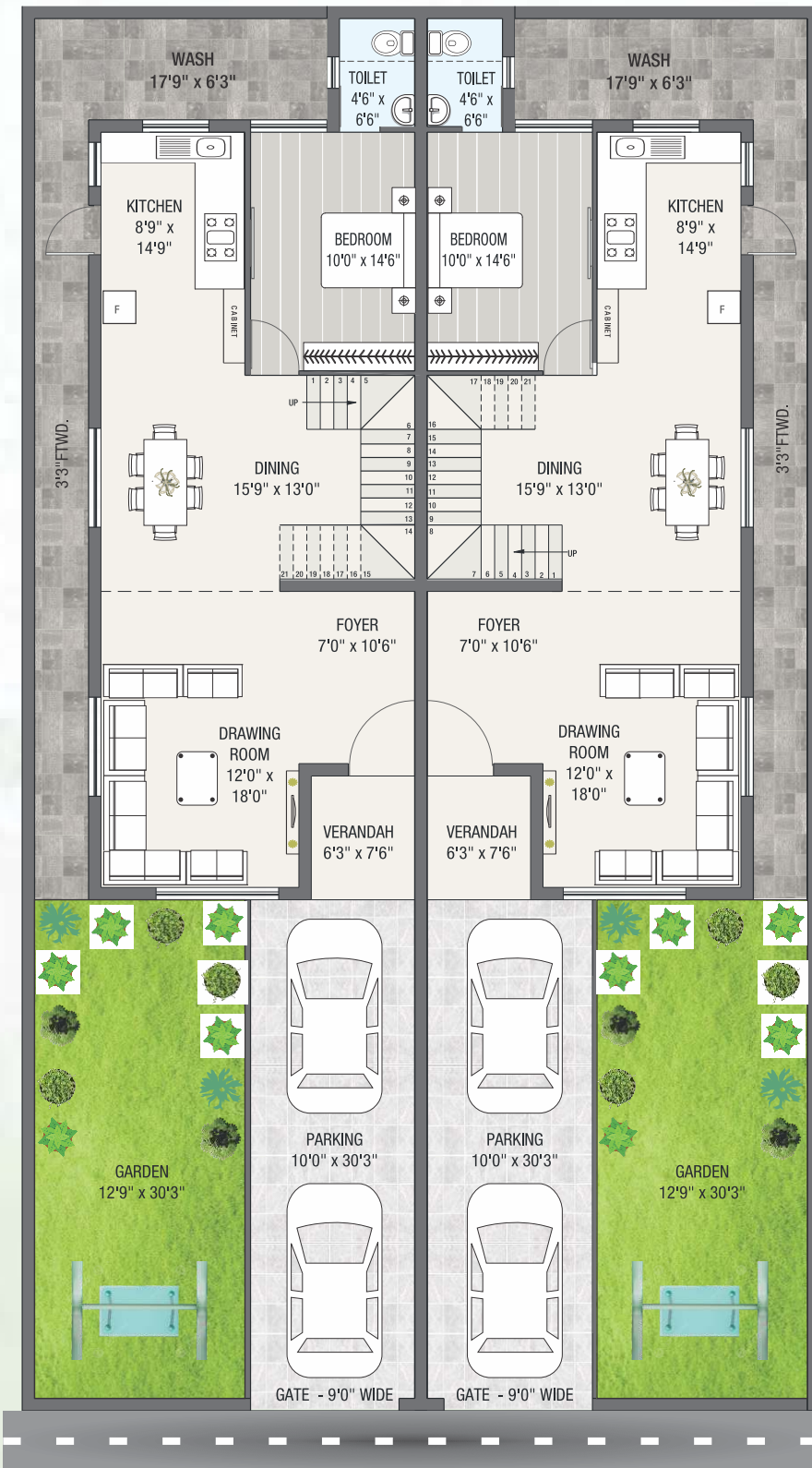
A PREMIUM

A collection of limited **32** villas that comes with high end facilities, offering a splendid luxurious lifestyle.



**ALPINE
WOODS**

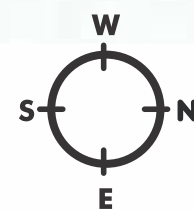
Type - A - Big Unit - 3BHK



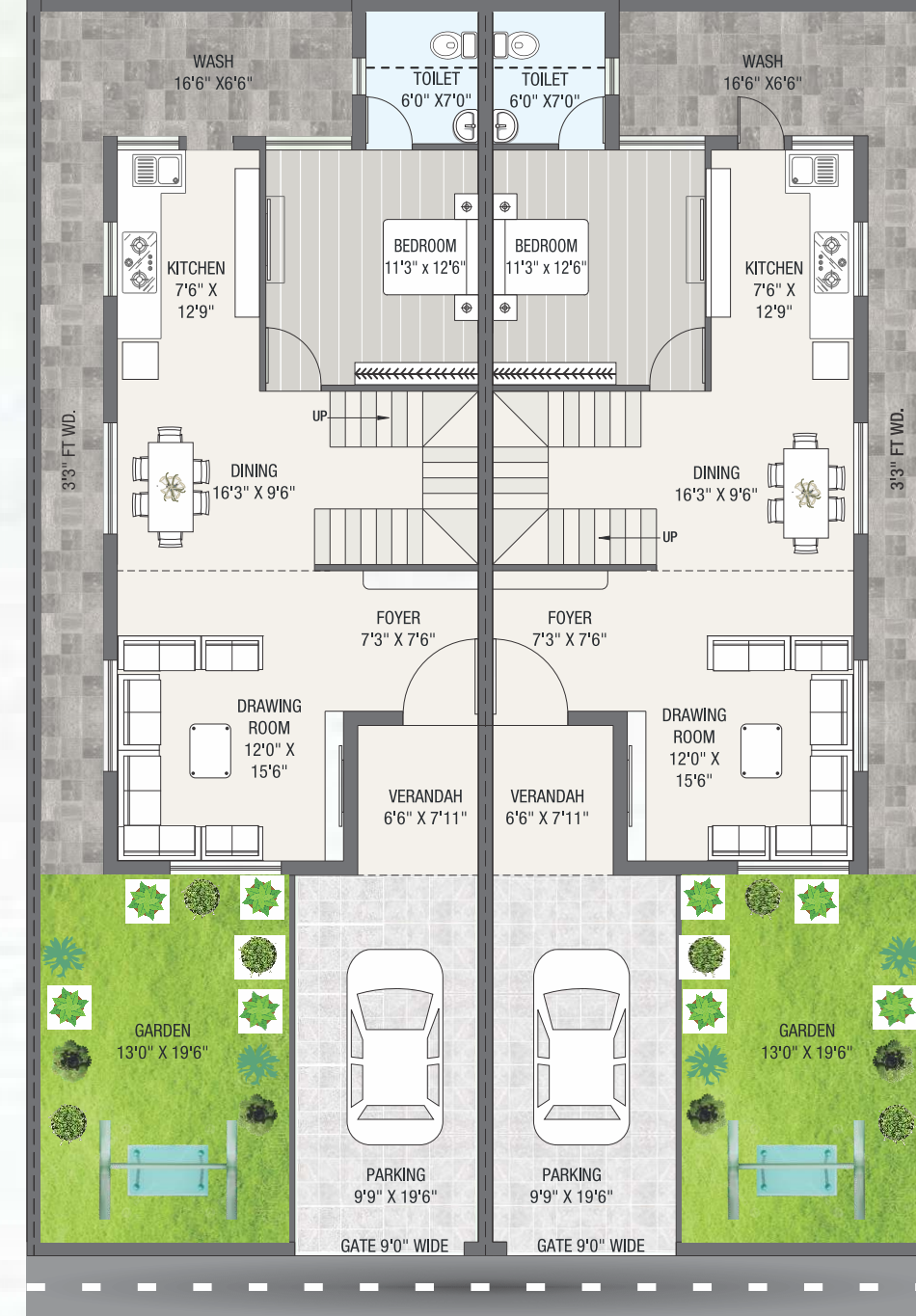
GROUND FLOOR PLAN

3 BHK Three Sided Open Villas

Plot Area: 2030.00 Sqft



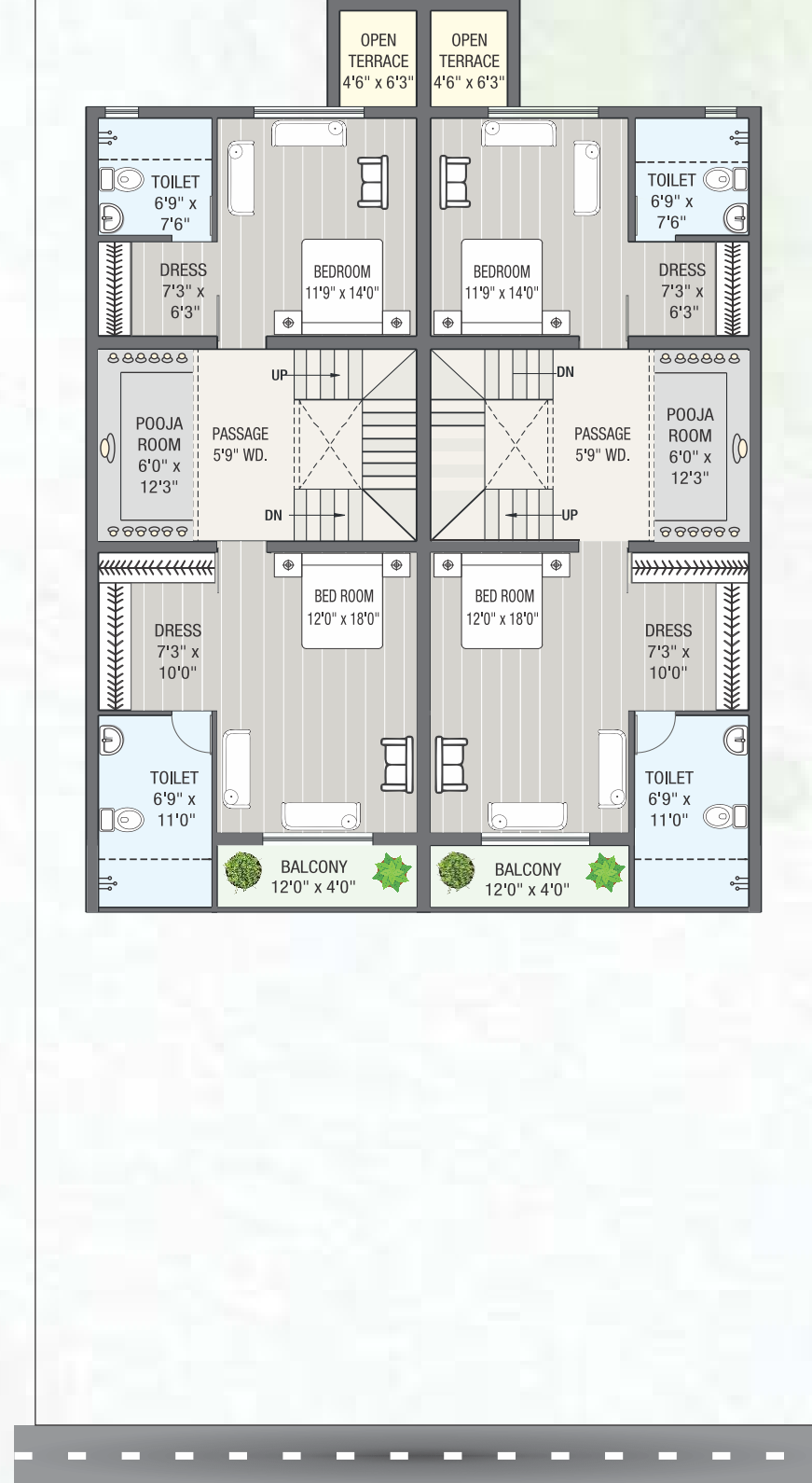
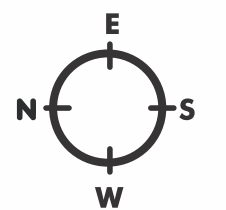
Type - B - Small Unit - 3BHK



GROUND FLOOR PLAN

3 BHK Three Sided Open Villas

Plot Area: 1599.00 Sqft

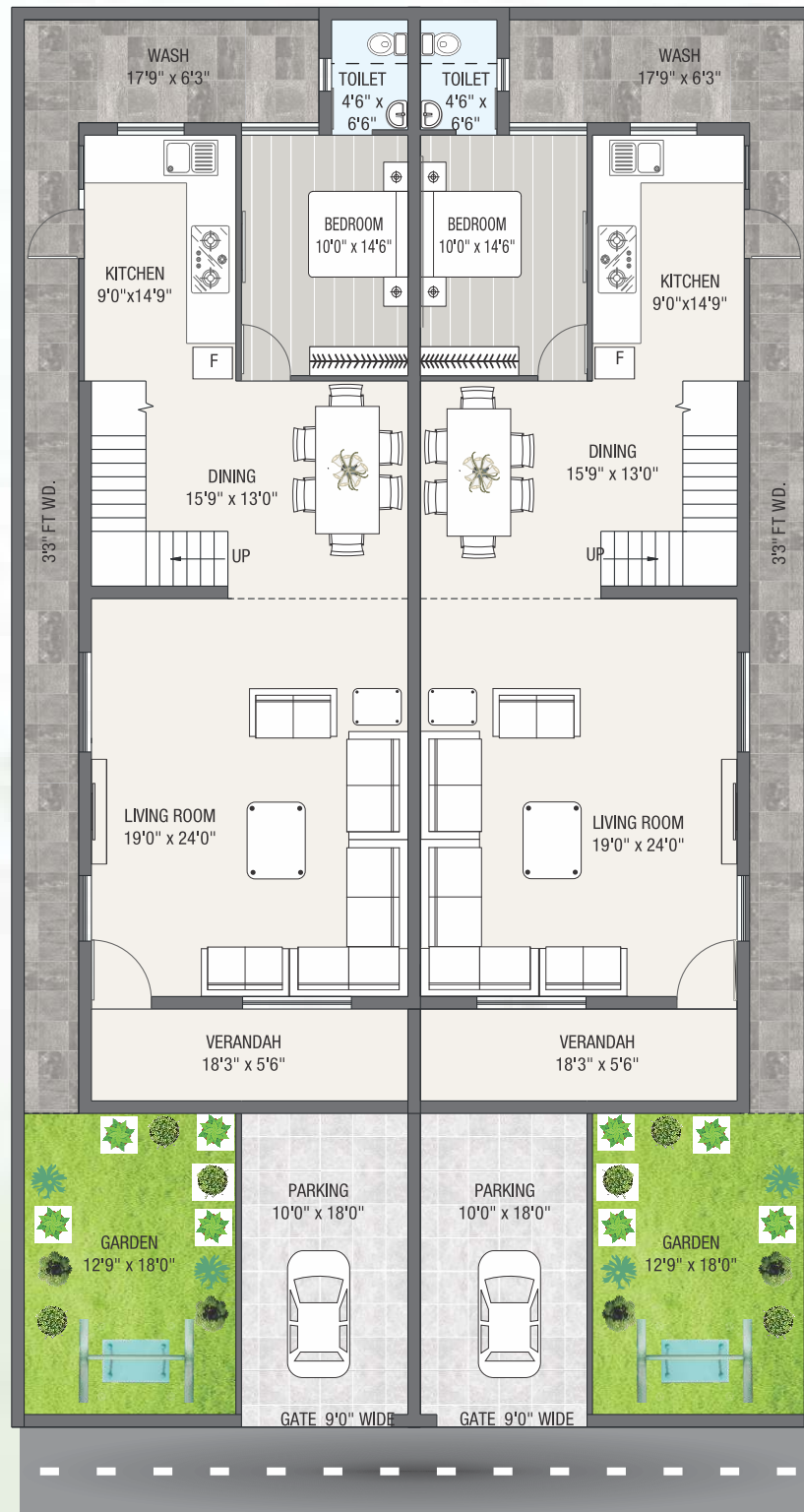


FIRST FLOOR PLAN



FIRST FLOOR PLAN

Type - C - OPTIONAL - 4BHK



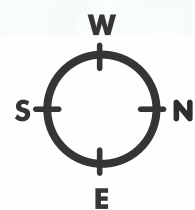
GROUND FLOOR PLAN



FIRST FLOOR PLAN

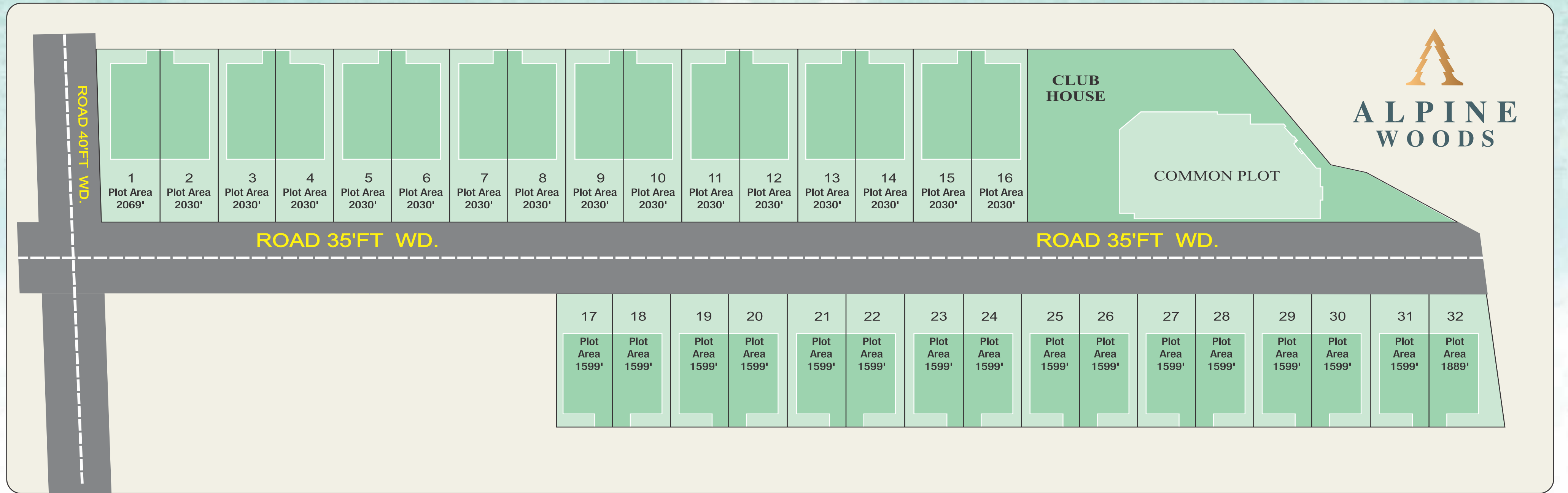
4 BHK Three Sided Open Villas

Plot Area: 2030.00 Sqft



walk into the land
of your *dream*

Alpine Woods is where the dream of owning a villa in the lap of luxury becomes real. Reminiscent of wealthy homes, here the comfort of community living melds seamlessly with the prerequisite of privacy. From the layout of these villas, to the avenue plantations and placement of the amenities, you are ensured a life of opulence. beautiful tree-lined streets, anti-skidtilled pram-friendly walkways and lush lawnstake your breath away.



LAYOUT

PLAN

a safe *heaven*
of magnificence

The uniqueness of Alpine Woods shines through the exclusivity it offers. Lush green exteriors and lavish interiors, set the tone. With its distinctive architecture, Alpine Woods gives you the best of both worlds a lively residential community and a heaven of absolute privacy.



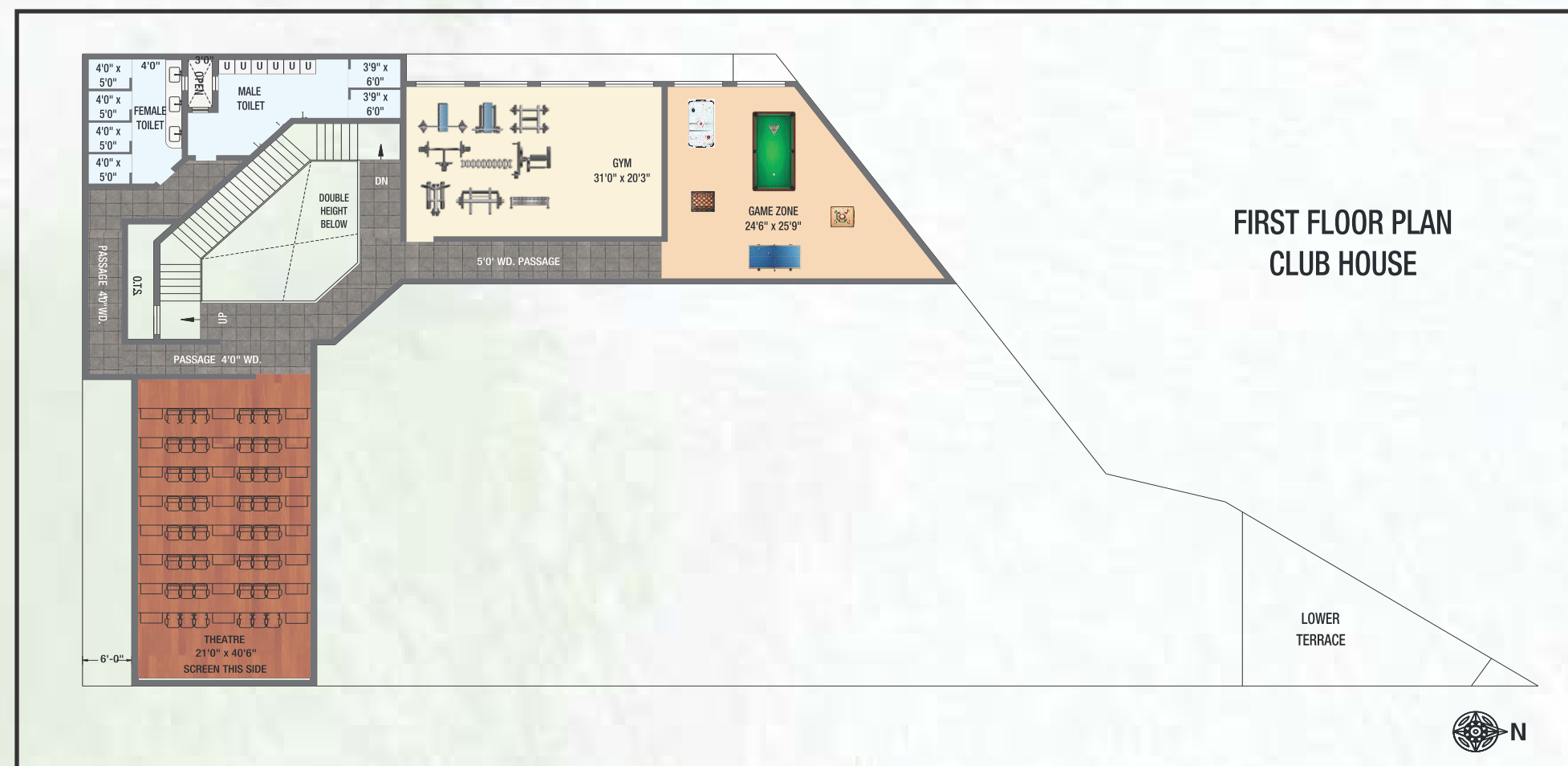


"Prestige, Privacy, Perfection"

At

club house

Elevate your leisure time
at our lavish clubhouse,
where every detail impresses.



Discover Alpine Woods Neighbourhood in Very Comfort Zone...



Education Campus

- 5 km from DPS
- 6 km from Lokpriya
- 6.6 km from Podar
- 5.2 km from JP Modi

Corporate Companies

- 30 km from Nayara
- 20 km from Reliance
- 16.6 km from GFSC
- 8 km from Digjam Mill

Healthcare & Hospitals

- 11 km from G.G. Hospital
- 6.9 km from Samarpan
- 1.2 km from WHO
- 2.9 km Leelavati Nature Club

Connectivity From Villas

- 5 km from Airport
- 5.4 km from Rajkot Bypass
- 6 km from BAPS Mandir

Entertainment Zone

- 1.0 km from NuLife
- 3.8 km from Laher Talav
- 3.9 km from RTV
- 4.3 km from Padam Banquet
- 4.6 km from Tea Post
- 4.6 km from Maples Box Cricket
- 17 km from JCR Entertainment

Restaurant & Resort

- 3.7 km from Highway Hari.
- 2.2 km from Food Resort
- 6.2 km from Keshwara's
- 6.5 km from Ashirwad Village
- 6.6 km from Ashirwad Club Resort

Little Minds, big adventures

Our play area is a place for kids to explore and dream, And for parents to relax and watch their kids beam."



Prestige *Aminities*



Covered Swimming Pool
With Rain Shower
(Adult + Children)



Gazebo Seatings



Changing Rooms



Theatre



Game Zone



Party Lawn
with Stage



Children
Play Area



Kitchen With Washyard
For Caterers



GYM

SPECIFICATIONS :

FLOORING

- Premium quality vitrified in drawing, dining, Kitchen & bedrooms.
- China mosaic flooring on terrace floor.

KITCHEN & WASH YARD

- Fully Glazed tiles up to slab level.
- Ample electric point for mixer, juicer, microwave, etc.
- Provision Point for R.O. Plant & Washing Machine in wash area.
- Glaze tiles in washing area & anti-skid tiles in flooring.
- Provision for chimney point on main platform.
- Black/white granite Sandwich platform with sink.

ELECTRIC

- Branded modular switches
- Premium quality ISI copper wiring with ample no. of points
- TV/Telephone/AC etc, points in drawing, dinning & bedroom
- Concealed wiring of well known brand.
- Provided basic holes for outlet units of split AC fitting in all bedrooms With waste water pipe fittings.

PLASTER & COLOR

- Internal plaster with acrylic putty finish.
- Sand face plaster on exterior surface of Bungalows.
- Acrylic emulsion paint on exterior walls.

BATHROOMS

- Fully glazed tiles up to slab level
- Standard quality sanitarywares like (Cera/Soncera/Jaquar)
- Standard quality plumbing fittings like (Jaquar/ Plumber / Arteor)
- Exhaust fan provision
- Provision for electric geyser point
- Solar Line Connection Fittings.

SECURITY

- Video door phone in each Bungalow.

WATER PROOFING

- All Balconies, Roof Slab, Terrace Slab & All Toilet Sunk Slab

DOORS

- All Doors are Flush Doors With 30 mm Thickness.
- All Doors With Wooden/Marble/ Granite door frames in all internal openings.

STRUCTURE

- Earthquake resistant & RCC frame structure Bungalows with good quality masonry materials With beautiful elevation.
- Marketable Clear Title & JADA approved plan.
- Every Villa Breaths in full air & light with road openings.

PLUMBING

- CPVC pipes for water supply & PVC pipes for soil, drainage & waste system.

WINDOWS

- Fully glazed with granite/marble sill.
- All Windows of Domel/UPVC/Section with Three Track.

A WAY TO YOUR HOME



Structure & Architect

Chirag Dattani
M. 98242 00595

Elevation Concept

Hiren Chavda
M. 97231 15130

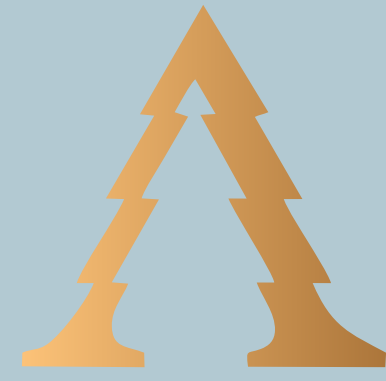
Legal Advisor

Punitbhai Mehta **Dilipbhai Bhojani**
M. 94277 75707 M. 94269 18755

Note

Payment of all extra work to be executed shall be made in advance. Stamp duty towards registration shall be borne by the client. Municipal corporations & GEB charges, if any, shall be borne by client. Any central or state gov't, taxes, if applicable shall have to borne by the clients All members shall have to essentially be the part of the society formed by the Association. Irregular payments may lead to cancellation of bookings and late payment will be charged Legal documentation charges shall be borne by clients of members & shall abide by the society by laws.

The information contained in this brochure is indicative of the kind of development that is proposed, it is prepared & issued in good faith and is for guidance only. It dose not constitute part of an offer or contract. Subject to the approval of the authorities of in the interest of the continuing improvement, the promoters reserve the rights to change plans, No of storeys, specifications of features without prior notice of obligation. Guidelines are enforced for not allowing grills, flower pots etc. to be fixed outside windows or any changes to be made in external elevation, All the images are just for idealization



ALPINE WOODS

A Project By :



BUILDERS & DEVELOPERS

DHIMANT SHAH | DIVYESH SHAH | NIKI POPAT

NISHITH SHAH

M. 97148 15158 | 81609 13335



: Site Address :

Near W.H.O. Reasearch Center, Behind Kotak Farm,
Opp. Manibhadra Derasar, Lakhabavad



www.home-maker.in



homemaker_1982@yahoo.com